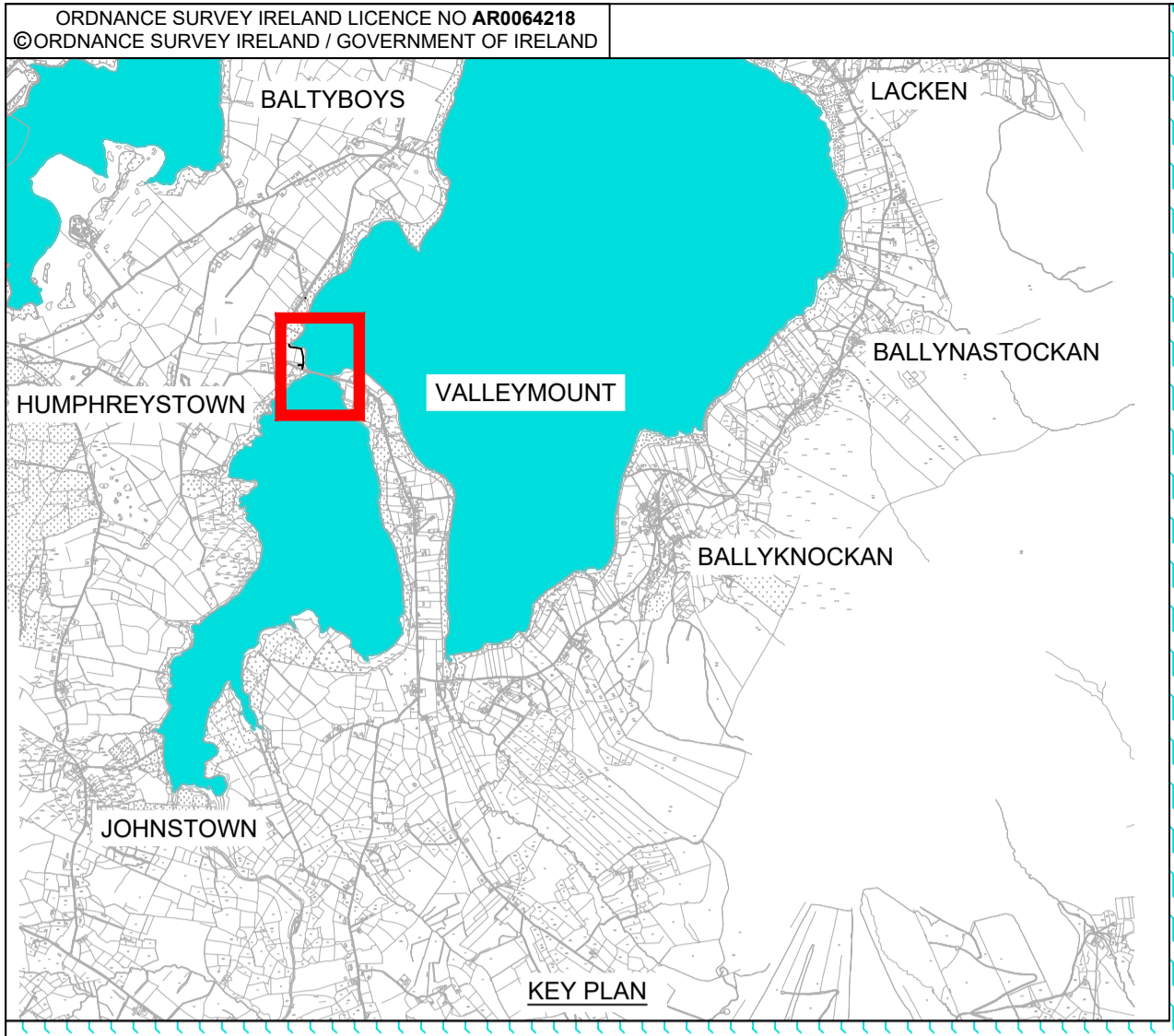


File name: Z:\UK\IED\B2\JOBS\PR-447455\_BLESSINGTON\_GREENWAY\900\_CAD\_GIS\910\_CAD\20-SHEETS\VALLEYMOUNT\60617025\_SHT\_BLGWY\_144\_VALLEYMOUNT.DWG  
 Last saved by: LUTTRELLC Last Plotted: 2021-11-10  
 Project Management Initials: Designer: CL Checked: MC Approved: EOM ISO A1 594mm x 841mm



**VALLEYMOUNT EAST CAR PARK**  
 REFURBISHMENT OF EXISTING CAR PARK. REFURBISHMENT INCLUDES INSTALLATION OF DRINKING WATER STATIONS, EV CHARGING POINTS, BIKE PARKING, WASTE COLLECTION, SEATING AND CCTV.

**BLESSINGTON LAKE CAR PARK**

TRAFFIC LIGHT SHUTTLE SYSTEM FOR VEHICULAR TRAFFIC TO FACILITATE RE-ALLOCATION OF SPACE FOR PEDESTRIAN AND CYCLISTS.



**PROJECT**  
**BLESSINGTON**  
**eGREENWAY**

**CLIENT**



**CONSULTANT**

AECOM  
 DOUGLAS BUSINESS CENTRE  
 CARRIGALINE ROAD  
 DOUGLAS  
 CORK  
 Tel: +353 (0)21 436 5006  
 www.aecom.com

**NOTES**

- THIS DRAWING IS TO BE READ IN CONJUNCTION WITH ALL OTHER RELEVANT PLANNING DRAWINGS AND DOCUMENTS.

**KEY:**

- PROPOSED GREENWAY
- PROPOSED GRASS VERGE
- BLESSINGTON LAKE
- SHARED FACILITY
- PROPOSED CYCLE LANE
- EXISTING CARRIAGEWAY

**ISSUE/REVISION**

I/R	DATE	DESCRIPTION
0	OCT 2021	ISSUED FOR PLANNING

**PROJECT NUMBER**

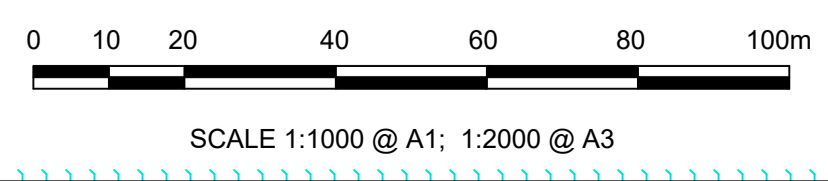
60617025

**SHEET TITLE**

PRELIMINARY DESIGN  
 VALLEYMOUNT  
 SHEET 1 OF 8

**SHEET NUMBER**

60617025\_SHT\_DD\_BLGWY\_144.0



This drawing has been prepared for the use of AECOM's client. It may not be used, modified, reproduced or relied upon by third parties, except as agreed by AECOM or as required by law. AECOM accepts no responsibility, and denies any liability whatsoever, for any party that uses or relies on this drawing without AECOM's express written consent. All measurements must be obtained from the stated dimensions.